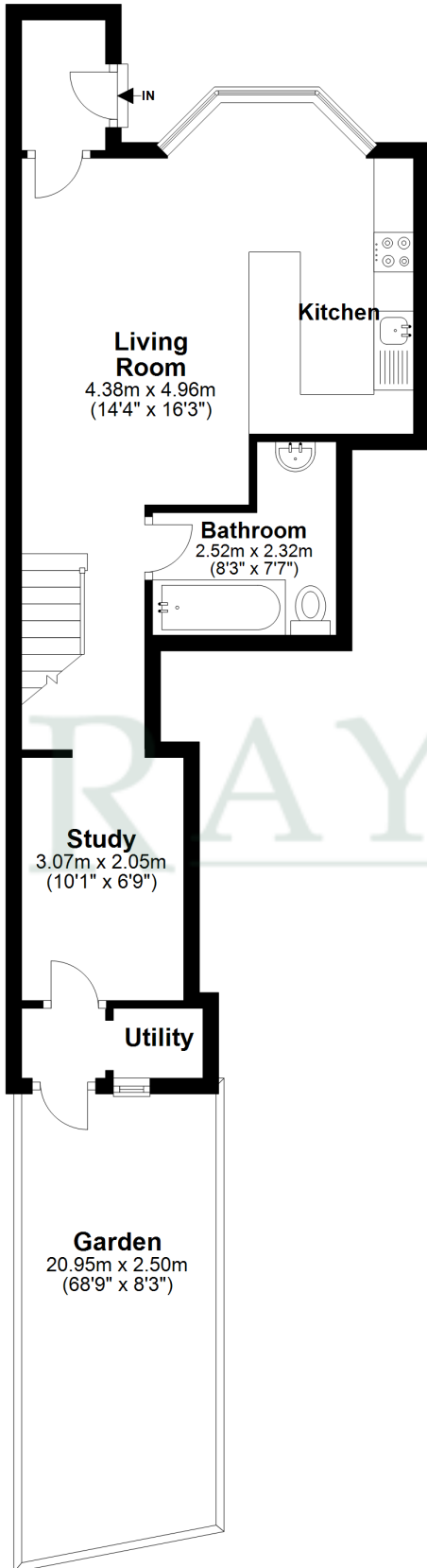
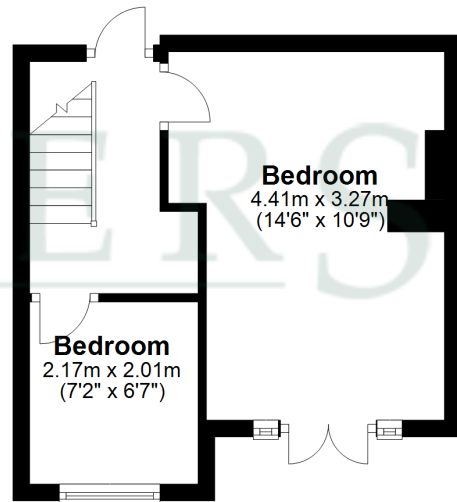


Basement
Approx. 40.6 sq. metres (437.0 sq. feet)



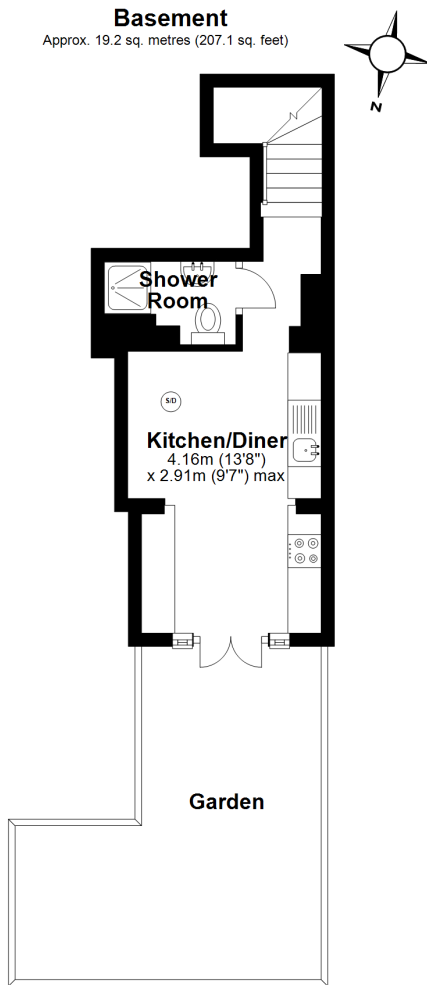
Upper Ground Floor
Approx. 23.2 sq. metres (249.2 sq. feet)



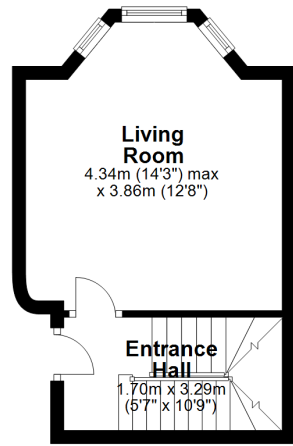
Total area: approx. 63.8 sq. metres (686.3 sq. feet)

Whilst every effort has been made to ensure the accuracy of the floor plan contained here, measurements of doors, windows, rooms and any other item are approximate and no responsibility is taken for any error, omission or mis-statement. This Plan is for illustrative purposes only and should be used as such by any prospective purchaser.

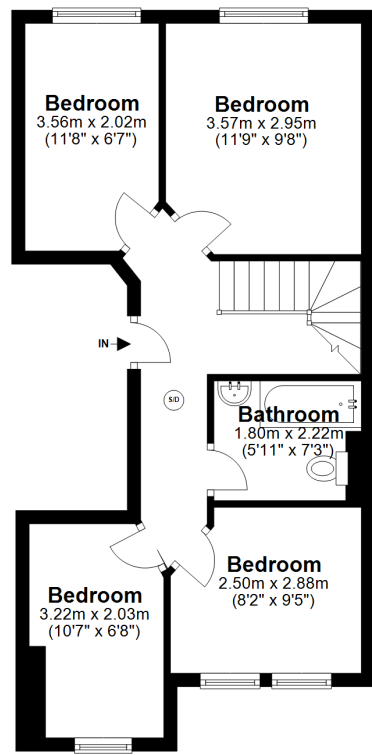
Plan produced using PlanUp.



Upper Ground Floor
Approx. 20.9 sq. metres (224.7 sq. feet)



First Floor
Approx. 44.5 sq. metres (478.5 sq. feet)

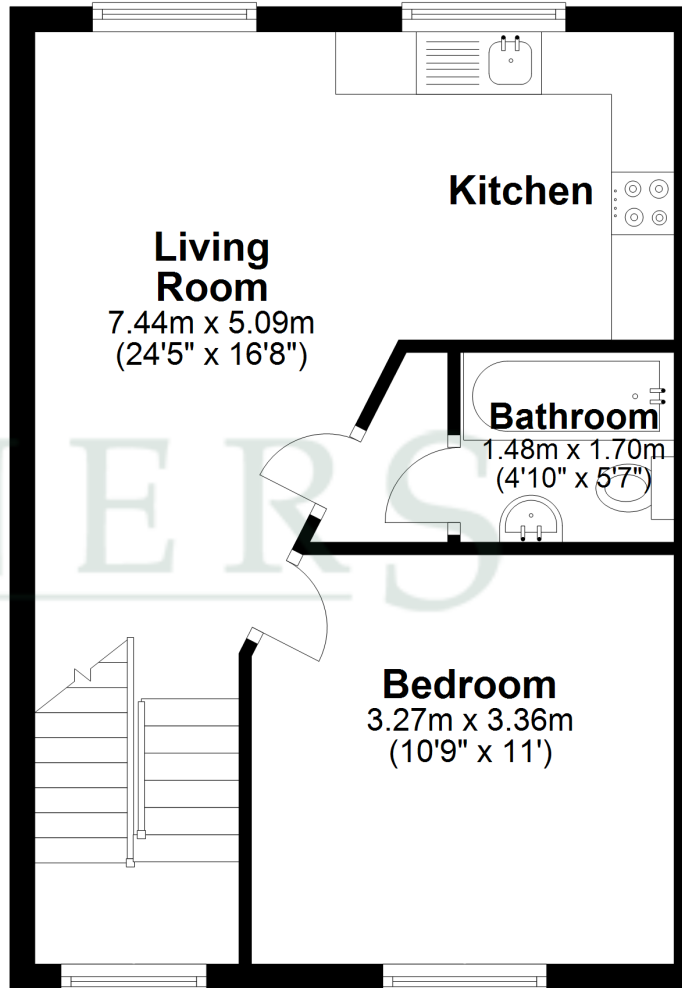


Total area: approx. 84.6 sq. metres (910.3 sq. feet)

Whilst every effort has been made to ensure the accuracy of the floor plan contained here, measurements of doors, windows, rooms and any other item are approximate and no responsibility is taken for any error, omission or mis-statement. This Plan is for illustrative purposes only and should be used as such by any prospective purchaser.
Plan produced using PlanUp.

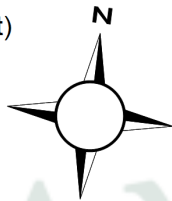
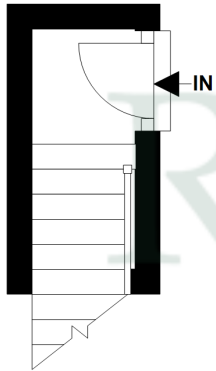
Second Floor

Approx. 37.9 sq. metres (408.4 sq. feet)



First Floor

Approx. 1.6 sq. metres (17.0 sq. feet)



Total area: approx. 39.5 sq. metres (425.3 sq. feet)

Whilst every effort has been made to ensure the accuracy of the floor plan contained here, measurements of doors, windows, rooms and any other item are approximate and no responsibility is taken for any error, omission or misstatement. This Plan is for illustrative purposes only and should be used as such by any prospective purchaser.

Plan produced using PlanUp.